



**For project overview questions contact:** Jean Leier  
Director of Corporate Affairs  
I-77 Mobility Partners  
980-337-2400  
[jleier@i77partners.com](mailto:jleier@i77partners.com)

**For construction related questions contact:** Sayra Brynn  
Public Relations & Construction Communications  
Sugar Creek Construction  
(980) 337-2399  
[sbrynn@sugarcreekllc.us](mailto:sbrynn@sugarcreekllc.us)

**\*\*\* TRAFFIC ADVISORY \*\*\***

**Upcoming Overnight Detours on I-77 at Exit 30 Griffith Street in Davidson**  
*Crews To Place Beams for New Bridge*

**Charlotte, N.C. (June 9, 2017)** – Construction of the first half of the new bridge at Exit 30 Griffith Street in Davidson reaches a milestone next week with the placement of beams. **This work will occur overnight Thursday, June 15, and Friday, June 16, from 11:00 p.m. to 5:00 a.m. weather permitting.**

As the beams are raised and put into place, no traffic will be able to cross over the current bridge. On Thursday, June 15, local traffic travelling from west of I-77 will take I-77 southbound to Exit 28 Catawba Avenue to I-77 northbound to access Exit 30 Griffith Street on the east side during the overnight hours. On Friday, June 16, local traffic travelling from east of I-77 will take I-77 northbound to Exit 31 Langtree Road to I-77 southbound to access Exit 30 Griffith Street on the west side. **(See detour maps)**

Traffic on I-77 will also experience a detour. On Thursday, June 15, motorists heading north on I-77 overnight will be routed onto the Exit 30 exit ramp and down the entrance ramp back onto I-77 northbound. *\*Southbound traffic on I-77 will not be affected.*

Overnight on Friday, June 16, motorists travelling southbound on I-77 will be routed onto the Exit 30 exit ramp and down the entrance ramp back onto I-77 southbound. *\*Northbound traffic on I-77 will not be affected.*

Once the beams for the new bridge are in place, crews will be preparing the bridge deck for the future roadway across the bridge. Nightly detours (Monday to Saturday) will continue to take place every week for the next several weeks starting on Monday, June 19 from 11:00 p.m. to 5:00 a.m.

Sugar Creek Construction and I-77 Mobility Partners are coordinating with the town of Davidson and area emergency responders to ensure efficient response during these detours.

When the new Exit 30 Griffith Street bridge is complete, it will have improved pedestrian access with the addition of bike lanes and sidewalks.

Motorists are encouraged to pay attention when approaching the work zone, obey the posted speed limit and work zone signs, and allow extra time to reach their destinations safely.

We encourage people to sign up to receive lane closure and traffic advisory information, and the latest information on the project.

<http://www.i77express.com/newsroom/newsletter-e-alerts/>

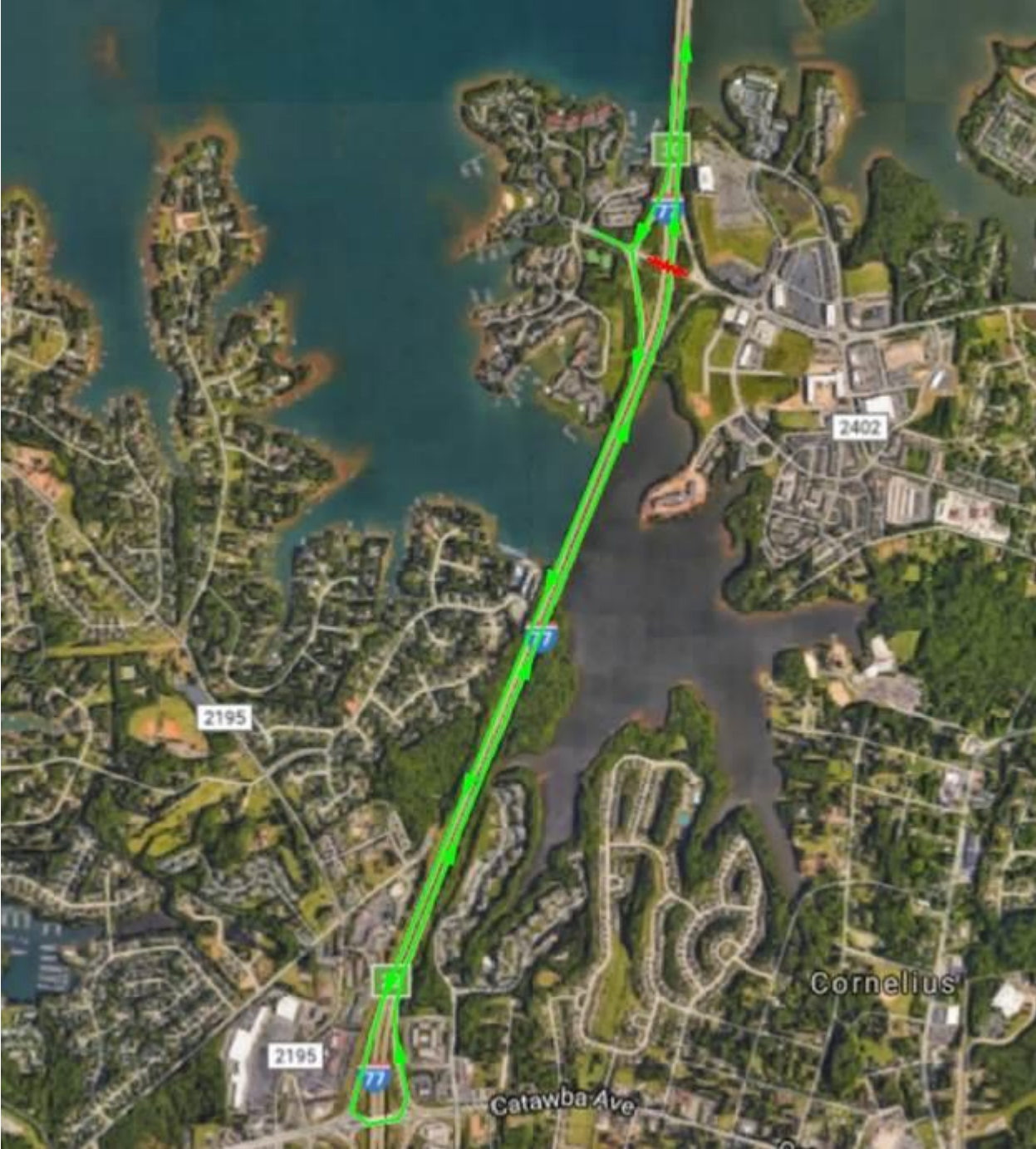
You can also follow us on social media, using the following:

I-77 Mobility Partners on Facebook [I-77 Express Lanes](#)

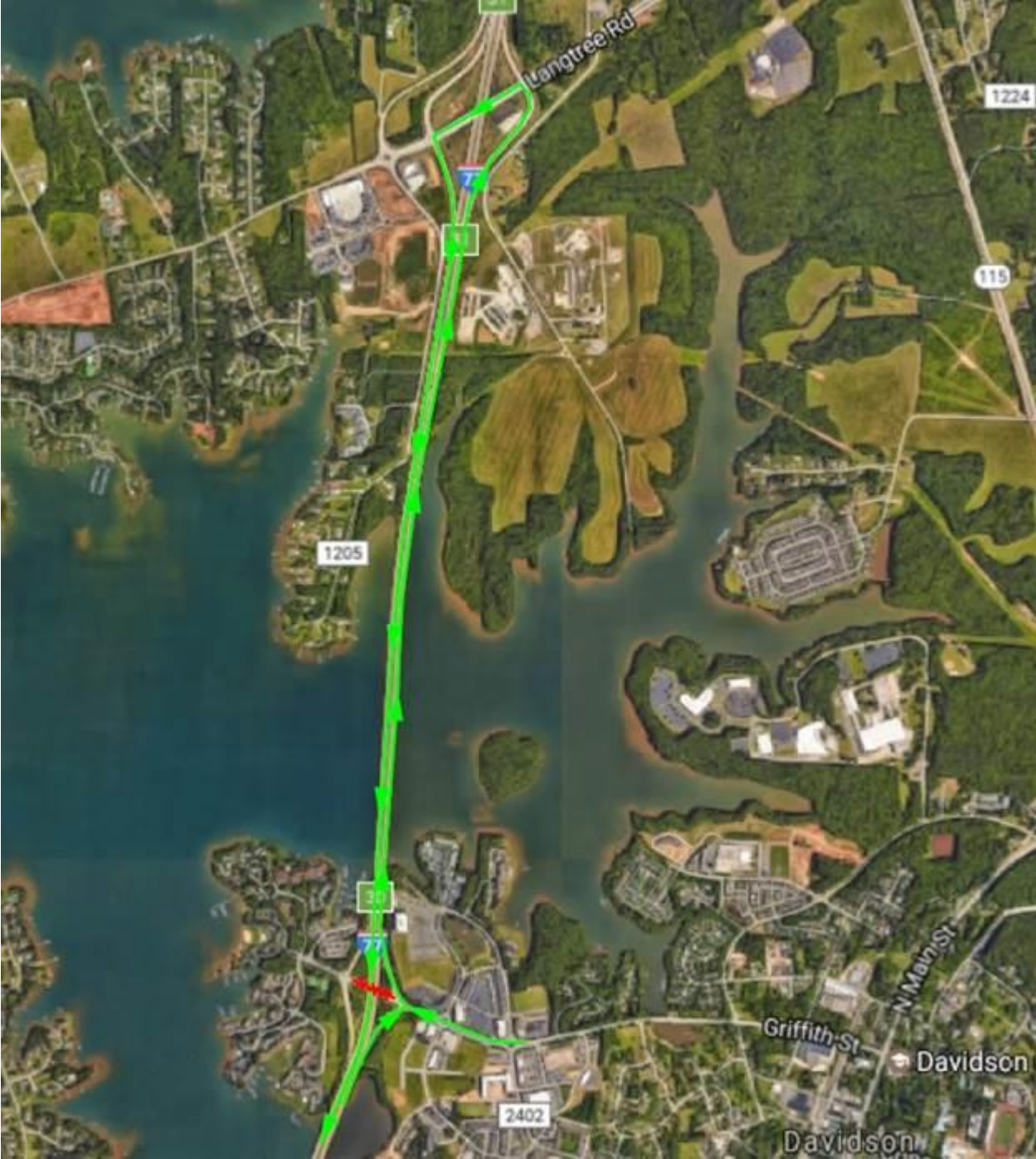
I-77 Mobility Partners on Twitter [@I77XPRSLanes](#)

Once the project is complete, dedicated express lanes will run adjacent to the existing general purpose lanes. The number of general purpose lanes will remain the same as today. Drivers will have the choice of using the express lanes to avoid travel delays, the general purpose lanes or a combination of both. Vehicles with three or more occupants (including the driver) and equipped with a transponder may use the express lanes for free. The full 26-mile project is slated to be completed in 2018.

###



I-77 Northbound Detour for Local West Side Traffic



**I-77 Southbound Detour for Local East Side Traffic**