



For project overview questions contact: Jean Leier

Director of Corporate Affairs

I-77 Mobility Partners

980-337-2400

jleier@i77partners.com

For construction related questions contact: Sayra Brynn

Public Relations & Construction Communications

Sugar Creek Construction

(980) 337-2399

sbrynn@sugarcreekllc.us

***** TRAFFIC ADVISORY *****

Upcoming Overnight Detours on I-77 at Exit 30 Griffith Street in Davidson – June 19 to June 25

Charlotte, N.C. (June 16, 2017) – As crews continue working on the construction of the first half of the new bridge at Exit 30 Griffith Street in Davidson, overnight detours on I-77 are planned for next week. Please be advised that the Griffith Street bridge at Exit 30 will be temporarily closed during the overnight detour hours. No traffic will be able to cross over the current bridge during the overnight detour hours from 11:00 p.m. to 5:00 a.m. Nightly detours (Monday to Saturday) will continue to take place every week for the next several weeks starting on Monday, June 19.

During the overnight detour hours motorists on I-77 will be routed onto the Exit 30 exit ramps and down the entrance ramps back onto I-77.

Local traffic travelling from west of I-77 will take I-77 southbound to Exit 28 Catawba Avenue to I-77 northbound to access Exit 30 Griffith Street on the east side during the overnight hours. **(See detour maps below)**

Local traffic travelling from east of I-77 will take I-77 northbound to Exit 31 Langtree Road to I-77 southbound to access Exit 30 Griffith Street on the west side during the overnight hours. **(See detour maps below)**

Traffic on I-77 will experience detours as follows:

I-77 Northbound

Wednesday, June 21 and Thursday, June 22 from 11:00 p.m. to 5:00 a.m.

*Motorists heading north on I-77 overnight will be routed onto the Exit 30 exit ramp and down the entrance ramp back onto I-77 northbound.

I-77 Southbound

Monday, June 19 and Tuesday, June 20 from 11:00 p.m. to 5:00 a.m.

*Motorists travelling southbound on I-77 will be routed onto the Exit 30 exit ramp and down the entrance ramp back onto I-77 southbound.

Sugar Creek Construction and I-77 Mobility Partners are coordinating with the town of Davidson and area emergency responders to ensure efficient response during these detours.

When the new Exit 30 Griffith Street bridge is complete, it will have improved pedestrian access with the addition of bike lanes and sidewalks.

Motorists are encouraged to pay attention when approaching the work zone, obey the posted speed limit and work zone signs, and allow extra time to reach their destinations safely.

We encourage people to sign up to receive lane closure and traffic advisory information, and the latest information on the project.

<http://www.i77express.com/newsroom/newsletter-e-alerts/>

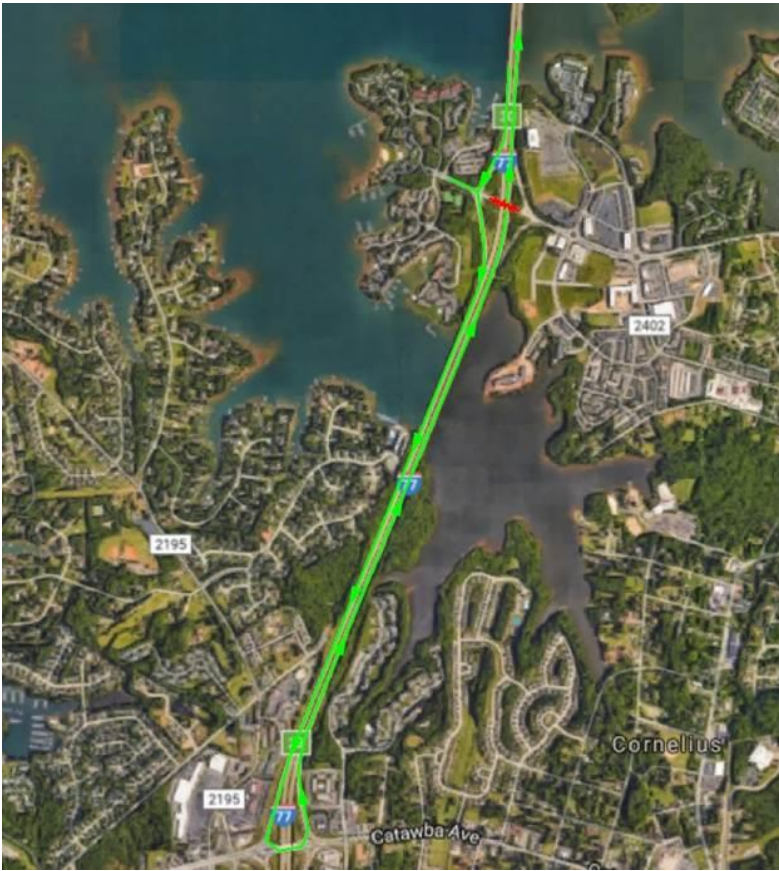
You can also follow us on social media, using the following:

I-77 Mobility Partners on Facebook [I-77 Express Lanes](#)

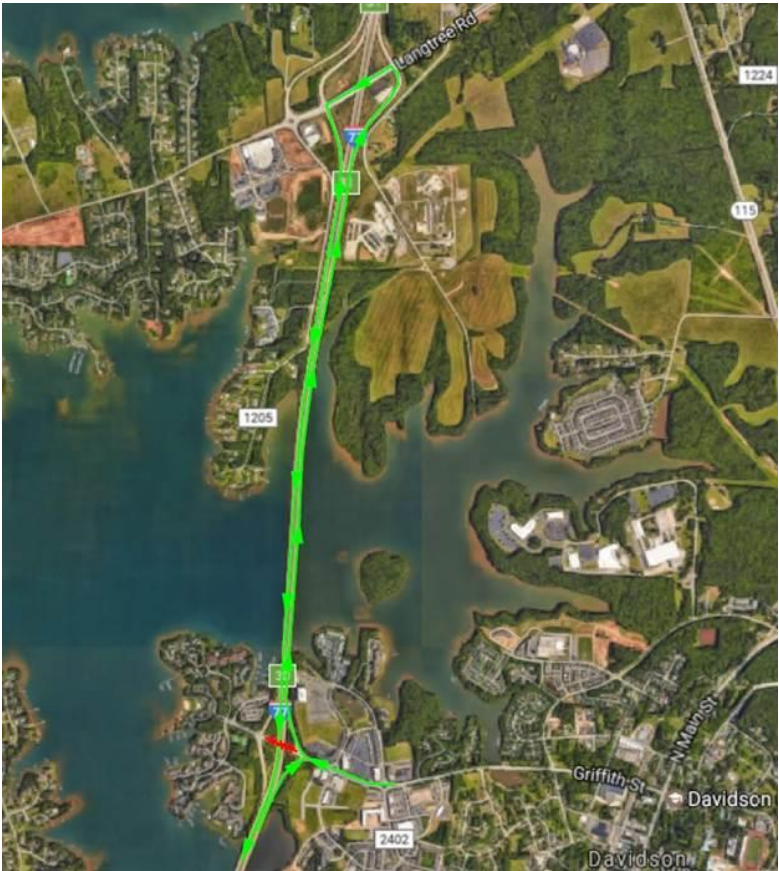
I-77 Mobility Partners on Twitter [@I77XPRSLanes](#)

Once the project is complete, dedicated express lanes will run adjacent to the existing general purpose lanes. The number of general purpose lanes will remain the same as today. Drivers will have the choice of using the express lanes to avoid travel delays, the general purpose lanes or a combination of both. Vehicles with three or more occupants (including the driver) and equipped with a transponder may use the express lanes for free. The full 26-mile project is slated to be completed in 2018.

###



I-77 Northbound Detour for Local West Side Traffic



I-77 Southbound Detour for Local East Side Traffic