



For project overview questions contact: Jean Leier
Director of Corporate Affairs
I-77 Mobility Partners
980-337-2400
jleier@i77partners.com

For construction related questions contact: Sayra Brynn
Public Relations & Construction Communications
Sugar Creek Construction
(980) 337-2399
sbrynn@sugarcreekllc.us

***** TRAFFIC ADVISORY *****

Crews to Shift Traffic to the Newly Constructed First Half of the Griffith Street Bridge and Begin Demolition of the Current Bridge at Exit 30 in Davidson.

Overnight Detours on I-77 at Exit 30 and Griffith Street

Charlotte, N.C. (October 17, 2017) – Beginning Thursday, October 19, construction crews will begin implementing a traffic shift on the Griffith Street bridge at Exit 30 in Davidson from the current bridge to the newly constructed bridge. This process, scheduled to take place during overnight hours, will take place in several steps, and allow construction crews to open the newly constructed bridge and begin demolition of the current bridge.

The first step of this work will occur overnight on Thursday, October 19, with the closure of the southbound off-ramp at Exit 30 from 11:00 p.m. to 5:00 a.m., weather permitting. Southbound motorists on I-77 traveling to the east side of Exit 30 Griffith Street bridge will need to proceed to Exit 28 and take I-77 northbound to Exit 30 Griffith Street. **(See detour maps below)**

The following night, Friday, October 20, crews will shift traffic on Griffith Street to the newly constructed first half of the Griffith Street bridge from 10:00 p.m. to 9:00 a.m. on Saturday morning, weather permitting. During this operation, no traffic will be able to cross over the current bridge. During the overnight hours, local traffic travelling from west of I-77 will take I-77 southbound to Exit 28 Catawba Avenue to I-77 northbound to access Exit 30 Griffith Street on the east side. Local traffic travelling from east of I-77 will take I-77 northbound to Exit 31 Langtree Road to I-77 southbound to access Exit 30 Griffith Street on the west side. **(See detour maps below)**

Starting on Monday night, October 23rd, crews will begin demolishing the current Griffith Street bridge. This operation will last four weeks, approximately. During the overnight detour hours, motorists on I-77 will be routed onto the Exit 30 exit ramps and down the entrance ramps back onto I-77. Nightly detours

(Monday to Friday) will continue to take place every week for the next several weeks. **(See specific dates, times and detour maps below)**

I-77 detours at Davidson as follows:

I-77 Southbound

Monday, October 23 to Friday, October 27 from 11:00 p.m. to 5:00 a.m.

Monday, October 30 to Friday, November 3 from 11:00 p.m. to 5:00 a.m.

Motorists travelling southbound on I-77 will be routed onto the Exit 30 exit ramp and down the entrance ramp back onto I-77 southbound. **Northbound traffic on I-77 will experience a lane closure.*

No traffic will be able to cross over the current bridge. Local traffic travelling from west of I-77 will take I-77 southbound to Exit 28 Catawba Avenue to I-77 northbound to access Exit 30 Griffith Street on the east side during the overnight hours. Local traffic travelling from east of I-77 will take I-77 northbound to Exit 31 Langtree Road to I-77 southbound to access Exit 30 Griffith Street on the west side. **(See detour maps below)**

I-77 Northbound

Monday, November 6 to Friday, November 10 from 11:00 p.m. to 5:00 a.m.

Monday, November 13 to Friday, November 17 from 11:00 p.m. to 5:00 a.m.

Motorists heading north on I-77 overnight will be routed onto the Exit 30 exit ramp and down the entrance ramp back onto I-77 northbound. **Southbound traffic on I-77 will experience a lane closure.*

No traffic will be able to cross over the current bridge. Local traffic travelling from west of I-77 will take I-77 southbound to Exit 28 Catawba Avenue to I-77 northbound to access Exit 30 Griffith Street on the east side during the overnight hours. Local traffic travelling from east of I-77 will take I-77 northbound to Exit 31 Langtree Road to I-77 southbound to access Exit 30 Griffith Street on the west side. **(See detour maps below)**

Sugar Creek Construction and I-77 Mobility Partners are coordinating with the town of Davidson and area emergency responders to ensure efficient response during these detours. Once the new Exit 30 Griffith Street bridge is completed, it will have improved pedestrian access with the addition of bike lanes and sidewalks. Motorists are encouraged to pay attention when approaching the work zone, obey the posted speed limit and work zone signs, and allow extra time to reach their destinations safely.

We encourage people to sign up to receive lane closure and traffic advisory information, and the latest information on the project.

<http://www.i77express.com/newsroom/newsletter-e-alerts/>

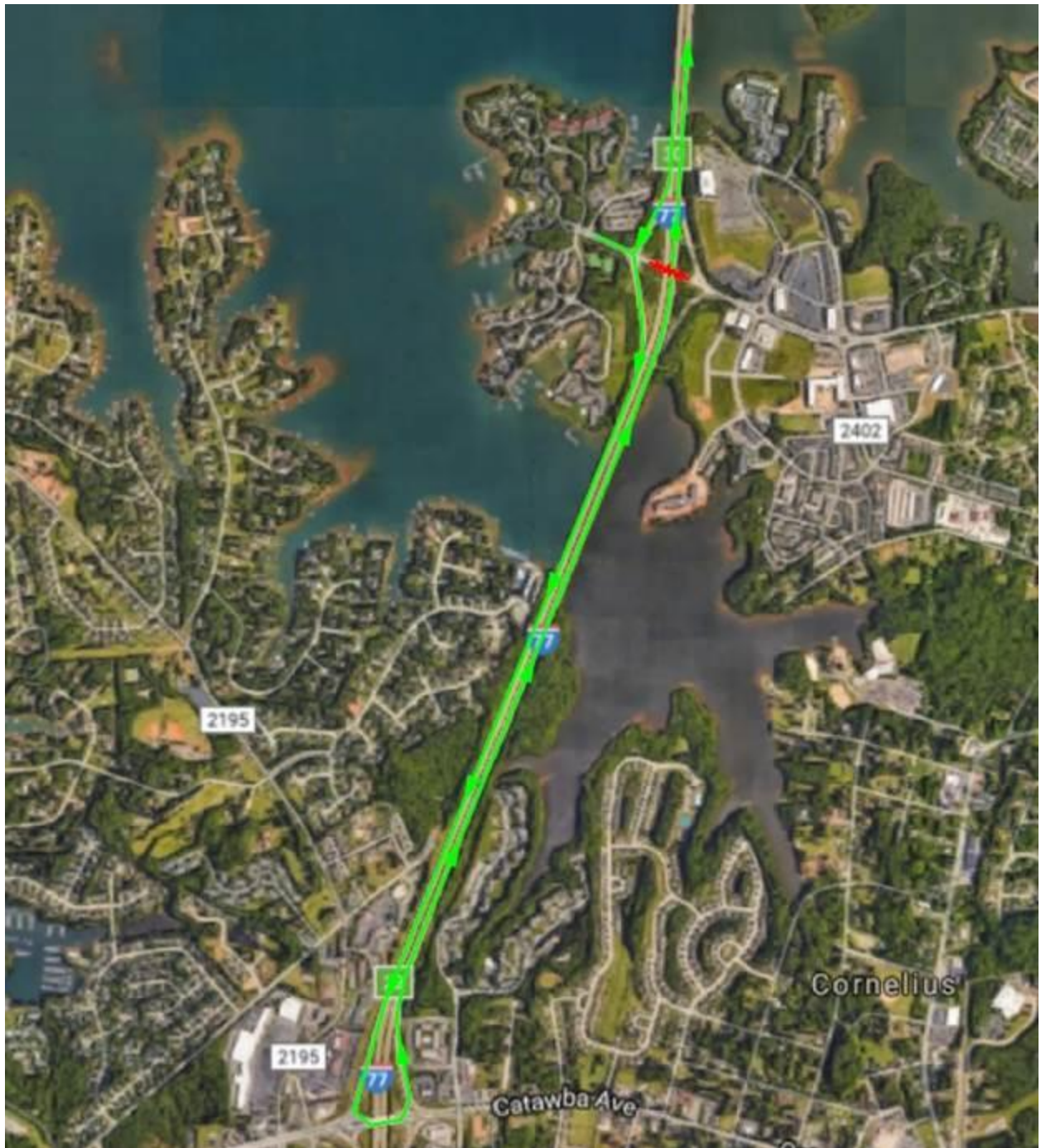
You can also follow us on social media, using the following:

I-77 Mobility Partners on Facebook [I-77 Express Lanes](#)

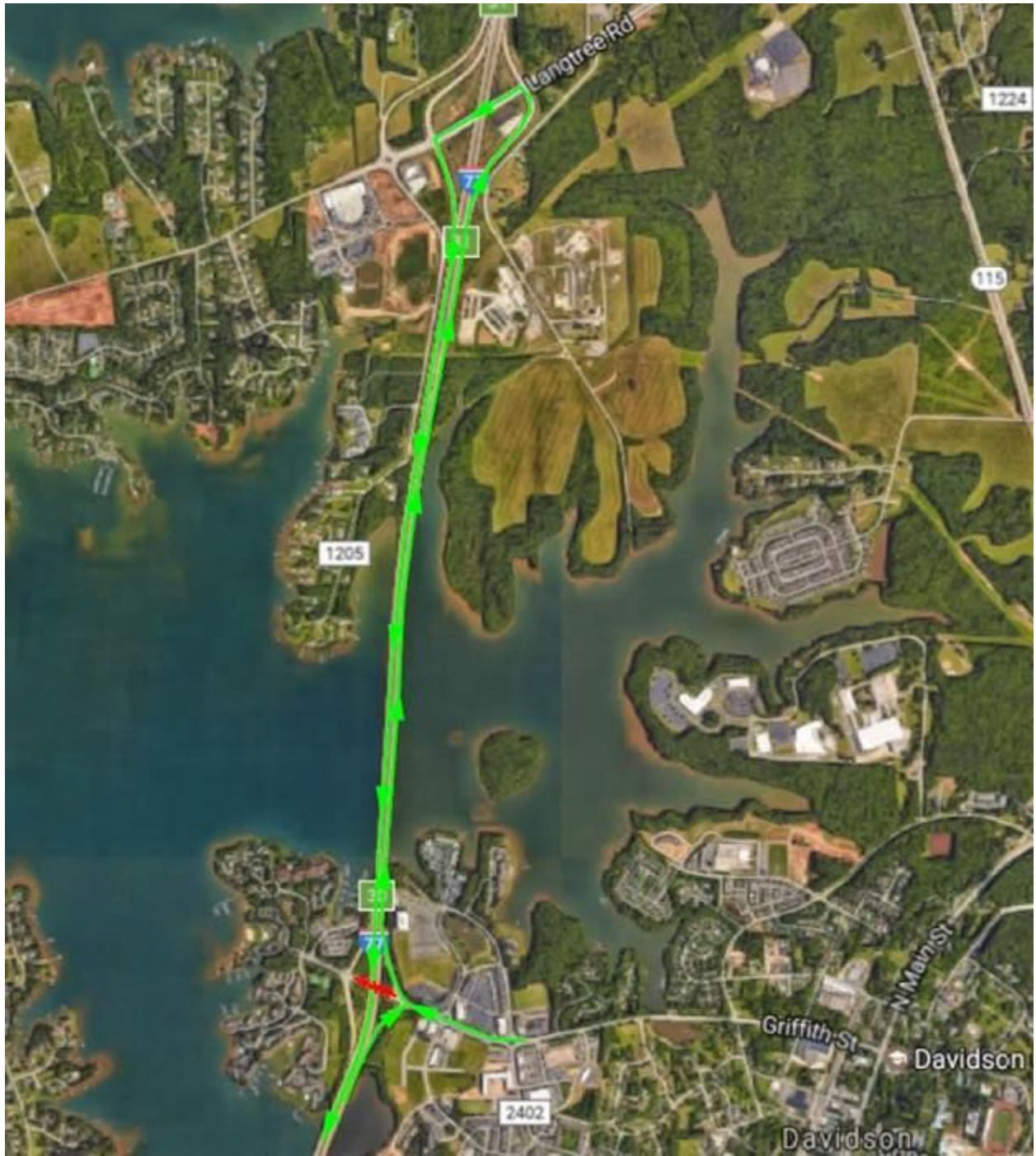
I-77 Mobility Partners on Twitter [@I77XPRSLanes](#)

Once the project is complete, dedicated express lanes will run adjacent to the existing general purpose lanes. The number of general purpose lanes will remain the same as today. Drivers will have the choice of using the express lanes to avoid travel delays, the general purpose lanes or a combination of both. Vehicles with three or more occupants (including the driver) and equipped with a transponder may use the express lanes for free. The 26-mile project is scheduled to open in 2018.

###



I-77 Northbound Detour for Local West Side Traffic



I-77 Southbound Detour for Local East Side Traffic